

N 680.1.2 SERIES EXPLOSION PROOF PUMPS



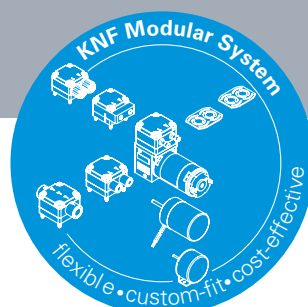
N 680.1.2 ST.9 E Ex

ADVANTAGES

- High chemical resistance
- Durable even with difficult operating conditions
- High gas tightness up to 6×10^{-3} mbar x l/s as a standard
- Flameproof motor with intrinsically safe terminal box for simple installation

POSSIBLE AREAS OF USE

- Environmental monitoring – especially in potentially explosive fields
- Process industry
- Chemical industry
- Energy technology
- Petrochemistry industry
- Maritime – especially for engine monitoring and emission measurement



Please visit our website
www.knf.com
to get more information

PERFORMANCE DATA		
Series model	N 680.1.2	
Material design	ST.9 E Ex	SP.9 E Ex
Pump head	Stainless steel	
Diaphragm	PTFE/EPDM	EPDM
Valves	Stainless steel	
Flow rate at atm. pressure (l/min)	220.0	
Ultimate vacuum (mbar abs.)	150	
Max. operating pressure (bar rel./psig)	3.0/43.0	
Permissible ambient temperature (°C)	+5 ... +40	
Permissible media temperature (°C)	+5 ... +40	
Gas tightness (mbar x l/s)	6×10^{-3}	
Weight (kg/lbs)	101.0/223.0	
ELECTRICAL DATA		
Voltage (V)	230/400	
Motor	Three-phase motor	
Protection class motor	IP 55	
Protection class pump	IP 20	
Frequency (Hz)	50	
Power P ₂ (W)	2.200	
Explosion protection three-phase motor	Ex II 2G Ex db eb IIC T4 Gb	
I _N Motor (A), 50 Hz	8.05/4.65	
Explosion protection pump parts	Ex II 2/2G Ex h IIB T3 Gb	Ex II 2/2G Ex h IIB+H2 T3 Gb

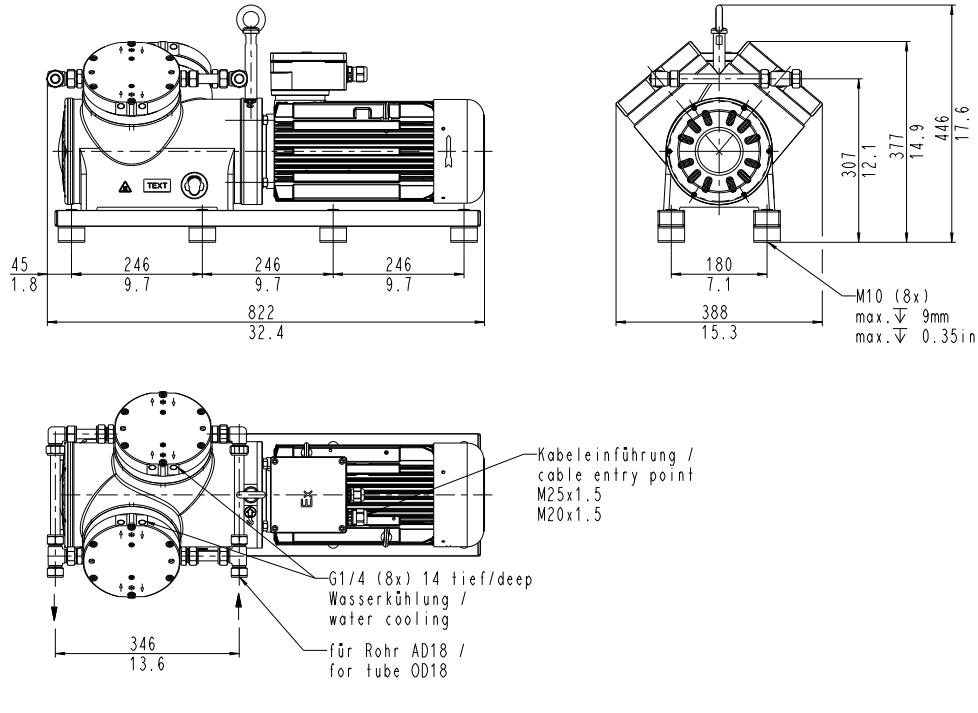
N 680.1.2 ST.9 E EX

PERFORMANCE DATA

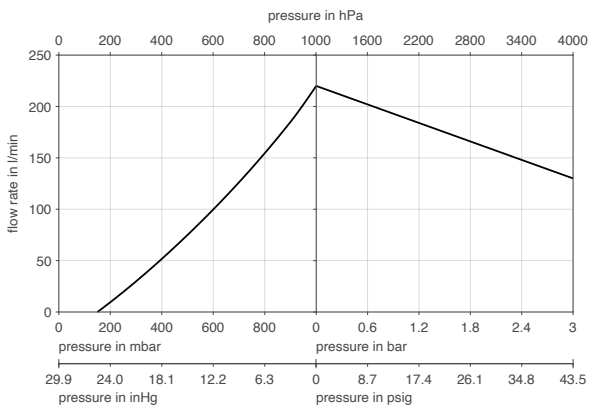
Series model	Flow rate at atm. pressure (l/min)	Max. operating pressure (bar rel./psig)	Ultimate vacuum (mbar abs.)
N 680.1.2 ST.9 E Ex	220.0	3.0/43.0	150

Flow rate determined at 20°C, 1000 mbar abs.
 (Pressure 0 to 1000 mbar abs in accordance with ISO 8778)

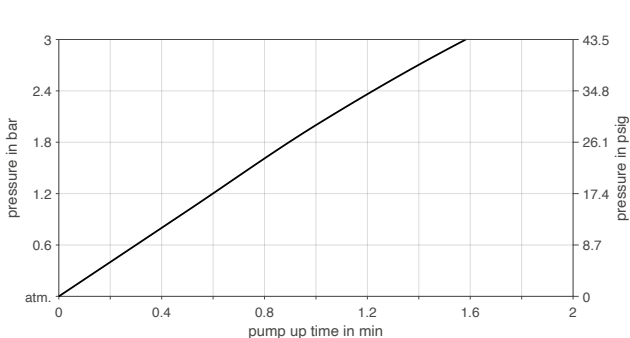
N 680.1.2 ST.9 E EX



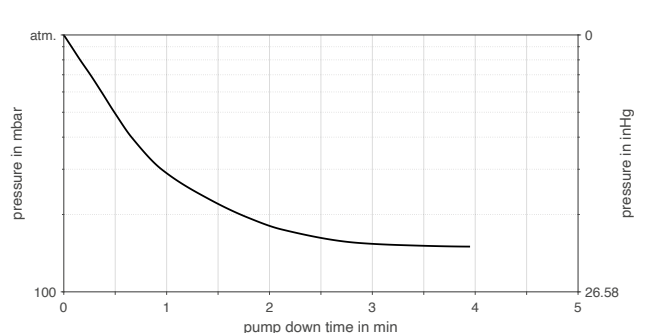
N 680.1.2 ST.9 E EX



N 680.1.2 ST.9 E EX | PUMP UP TIME FOR 100 LITER VESSEL



N 680.1.2 ST.9 E EX | PUMP DOWN TIME FOR 100 LITER VESSEL



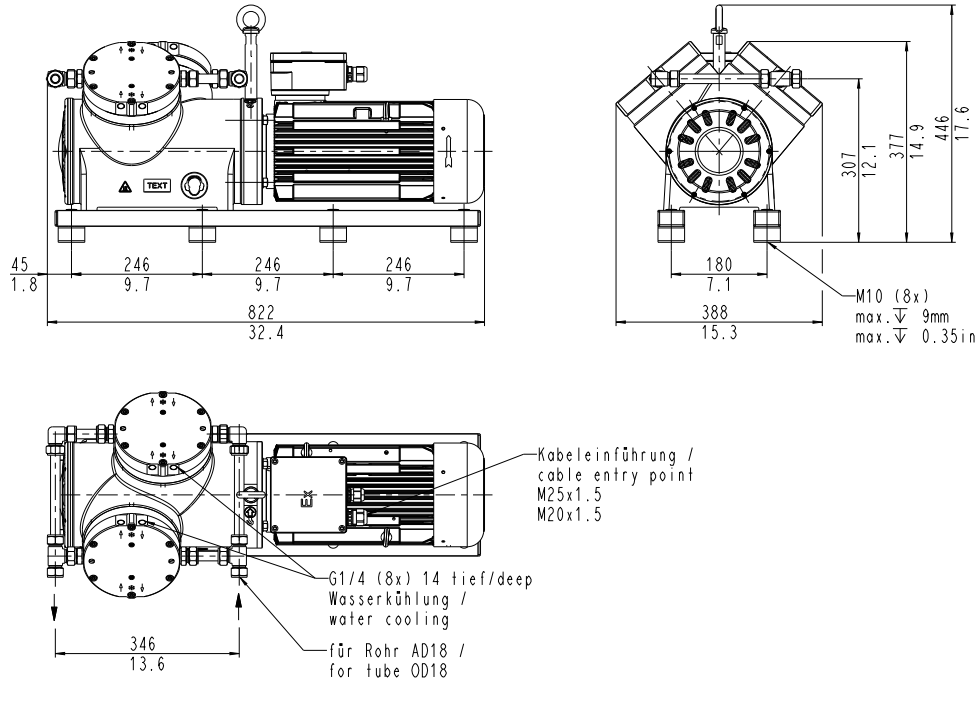
N 680.1.2 SP.9 E EX

PERFORMANCE DATA

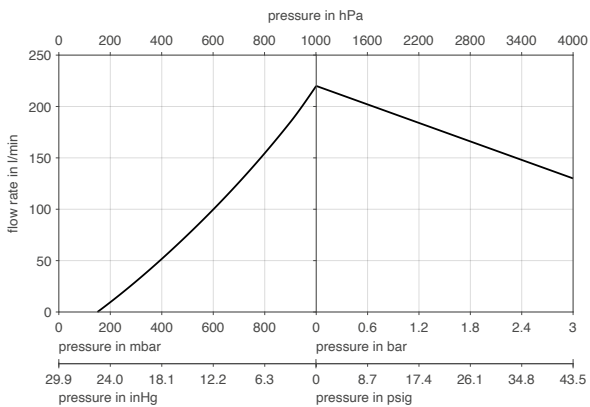
Series model	Flow rate at atm. pressure (l/min)	Max. operating pressure (bar rel./psig)	Ultimate vacuum (mbar abs.)
N 680.1.2 SP.9 E EX	220.0	3.0/43.0	150

Flow rate determined at 20°C, 1000 mbar abs.
 (Pressure 0 to 1000 mbar abs in accordance with ISO 8778)

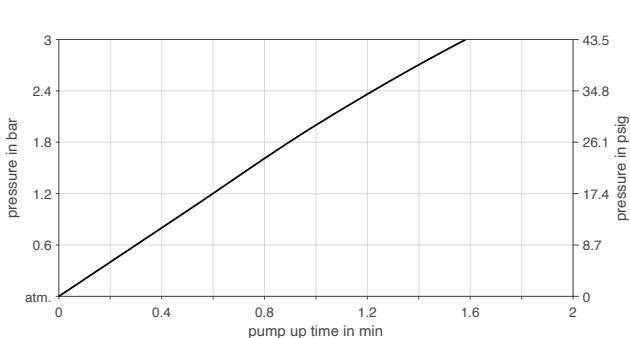
N 680.1.2 SP.9 E EX



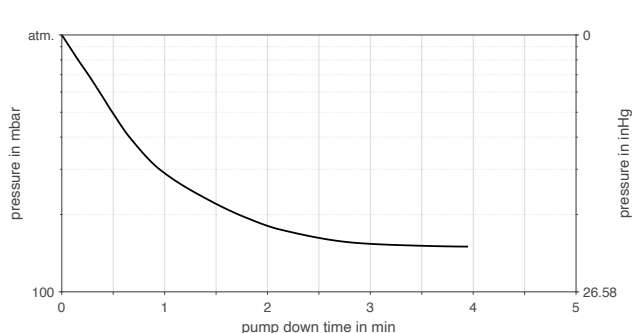
N 680.1.2 SP.9 E EX




N 680.1.2 SP.9 E EX | PUMP UP TIME FOR 100 LITER VESSEL



N 680.1.2 SP.9 E EX | PUMP DOWN TIME FOR 100 LITER VESSEL



ACCESSORIES

Description	Illustration	Part No.
Ring corrugated hose for pneumatic connection; length 500 mm		333224
Ring corrugated hose with certificate for pneumatic connection; length 500 mm		333226
Water cooling connection .9/.13		329236
Transport eyebolt		311535
Wrench for retainer plate		128753
Sprocket for coupling		322343
Test adapter for coupling		322339

SPARE PARTS

Description	Part No.
Spare parts kit N 680.1.2 ST.9 E Ex	333499
Spare parts kit N 680.1.2 SP.9 E Ex	333500

The performance values for the series models shown on this data sheet were determined under test conditions. The actual performance values may differ and depend in particular on the usage conditions and therefore on the specific application, on the parameters of the components involved in the user's system and on any technical modifications carried out which deviate from the standard configuration or the as delivered condition.

If individual designs have been created for specific customers on the basis of series models, other technical performance data may apply. Before operation begins, the relevant operating instructions and/or assembly or installation instructions should be read and the safety information contained in these instructions should be noted. KNF reserves the right to make changes to the product and the associated documentation without prior notice to the customer.



www.knf.com