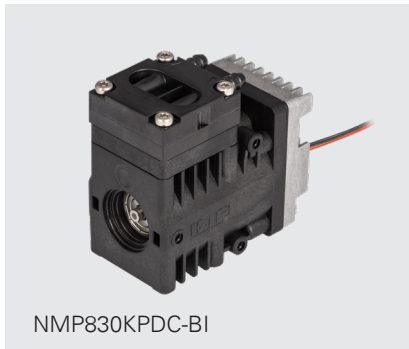
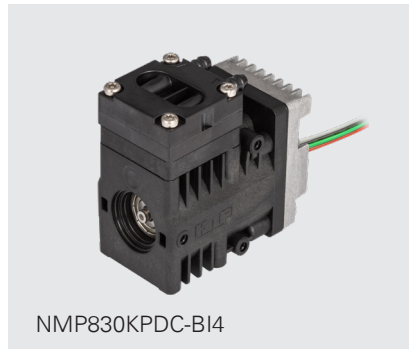


NMP830 DC-BI SERIES MICRO DIAPHRAGM GAS PUMPS



NMP830KPDC-BI



NMP830KPDC-BI4

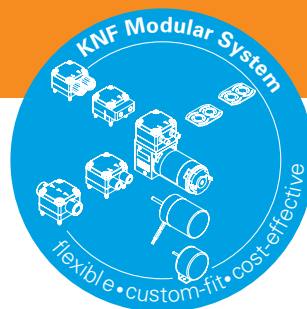
ADVANTAGES

- Customizing available
- Tested to customers specs
- High performance to size, efficiency and weight ratio
- Excellent reliability/durability
- Speed controllable
- Low sound level
- Long service life
- Uncontaminated transfer
- Maintenance free
- High chemical resistance
- Can be installed in any position

POSSIBLE AREAS OF USE

- Medical devices
- Analytical equipment
- Emission measurement
- Reprographic
- Degassing
- Safety/Security
- Portable devices

Please visit our website
www.knf.com
to get more information.



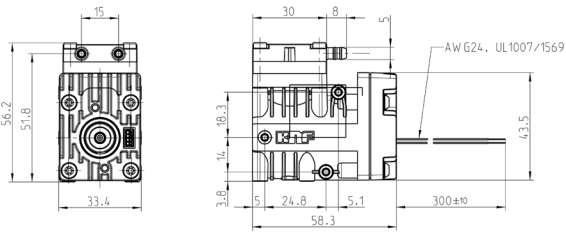
| PERFORMANCE DATA | | | | |
|---|---|------|------------------------------|------|
| Series Model | NMP830 | | | |
| Material design | KPDC-BI | | KPDC-BI4 | |
| Pump head | PPS | | | |
| Diaphragm | EPDM | | EPDM | |
| Valves | EPDM | | EPDM | |
| Flow rate at atm. pressure (l/min) | 2.5 | | 2.5 | |
| Ultimate vacuum (mbar abs.) | 250 | | 250 | |
| Ultimate pressure (bar rel) | 1.4 | | 1.4 | |
| Permissible media and ambient temperature (° C/° F) | +5° C to +40° C / 41° F to 104° F (extended temperature range on request) | | | |
| Weight (g/oz) | 161/5.67 | | | |
| ELECTRICAL DATA | | | | |
| Voltage (V) | 12 | 24 | 12 | 24 |
| Motor | Integrated brushless DCBI, 2 wire | | Integrated brushless, 4 wire | |
| I _{max} (A) | 0.49 | 0.27 | 0.49 | 0.27 |

NMP830KPDC-BI

PERFORMANCE DATA

| Series model | Flow rate at atm. pressure (l/min) | Max. operating pressure (bar rel) | Ultimate vacuum (mbar abs.) |
|-------------------|------------------------------------|-----------------------------------|-----------------------------|
| NMP830KPDC-BI 12V | 2.5 | 1.4 | 250 |
| NMP830KPDC-BI 24V | 2.5 | 1.4 | 250 |

NMP830KPDC-BI



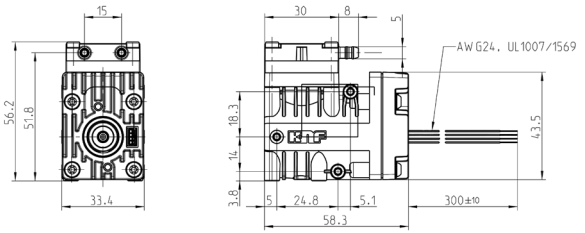
Dimensions in mm

NMP830KPDC-BI4

PERFORMANCE DATA

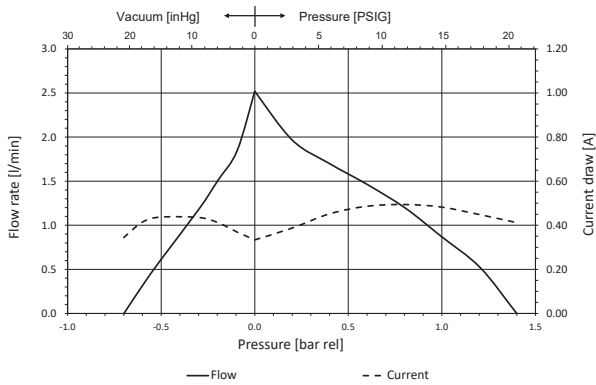
| Series model | Flow rate at atm. pressure (l/min) | Max. operating pressure (bar rel) | Ultimate vacuum (mbar abs.) |
|--------------------|------------------------------------|-----------------------------------|-----------------------------|
| NMP830KPDC-BI4 12V | 2.5 | 1.4 | 250 |
| NMP830KPDC-BI4 24V | 2.5 | 1.4 | 250 |

NMP830KPDC-BI4

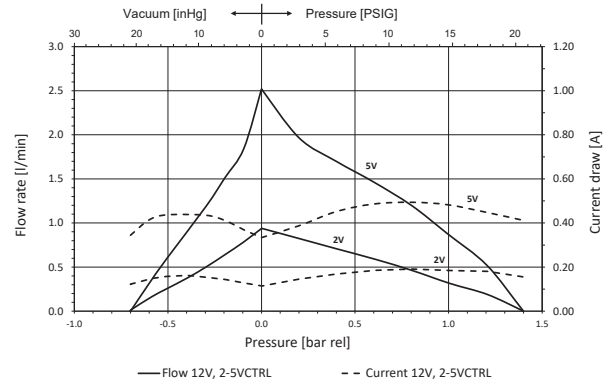


Dimensions in mm

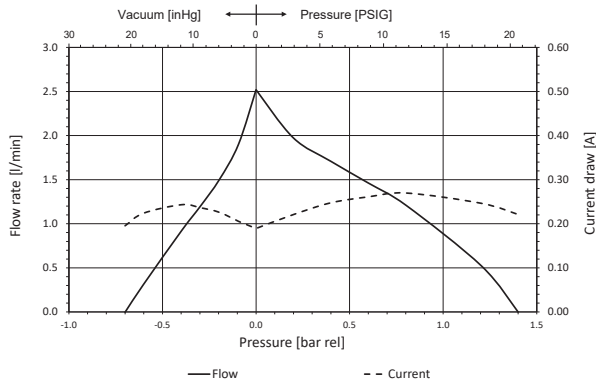
NMP830KPDC-BI 12V FLOW CURVE



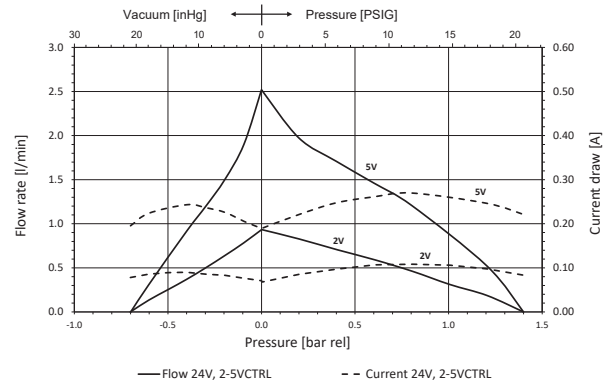
NMP830KPDC-BI4 12V FLOW CURVE



NMP830KPDC 24V FLOW CURVE



NMP830KPDC-BI4 24V FLOW CURVE





DIGITAL CUSTOMIZATION

Thanks to digital technology, this pump can be quickly adapted to the customer's system. This is done by parametrizing the firmware of the motor at KNF.

| OPTIONS | | | |
|------------------|--------------|----------|--|
| Description | Illustration | Part No. | Details |
| Connecting plate | | | DN4/6 compression fitting M5 inside thread UNF 1/4"-28 inside thread |

| ACCESSORIES | | | |
|-------------|--------------|----------|----------------------------|
| Description | Illustration | Part No. | Details |
| Silencer | | 024805 | For hose barbs |
| Silencer | | 314005 | For DN4/6 connecting plate |

| SPARE PARTS | | | |
|--|--------------|----------------------------|--|
| Description | Illustration | Part No. | Details |
| Spare part kit NMP830KP NMP830KV NMP830KT | | 326908 120805 120806 | One Kit per head containing valve, o-ring and diaphragm. |

The performance values for the series models shown on this data sheet were determined under test conditions. The actual performance values may differ and depend in particular on the usage conditions and therefore on the specific application, on the parameters of the components involved in the user's system and on any technical modifications carried out which deviate from the standard configuration or the as delivered condition.

If individual designs have been created for specific customers on the basis of series models, other technical performance data may apply. Before operation begins, the relevant operating instructions and/or assembly or installation instructions should be read and the safety information contained in these instructions should be noted. KNF reserves the right to make changes to the product and the associated documentation without prior notice to the customer.



www.knf.com